



## Instructions

Congratulations for buying your Slimline-case for ERC-M. This document will guide you through the needed steps for assembly of the Slimline-case and integration of the ERC-M. You will reach the best result by following these instructions step by step.

## Table of contents

Safety-Instructions .....	1
1. Assembly of the Slimline-case .....	2

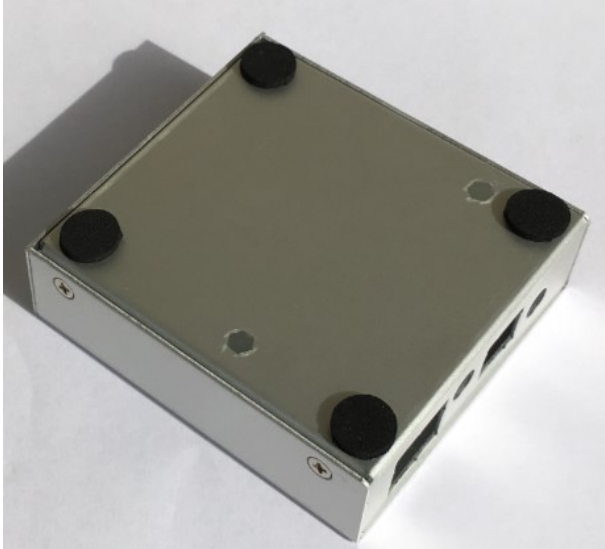
## Safety-Instructions



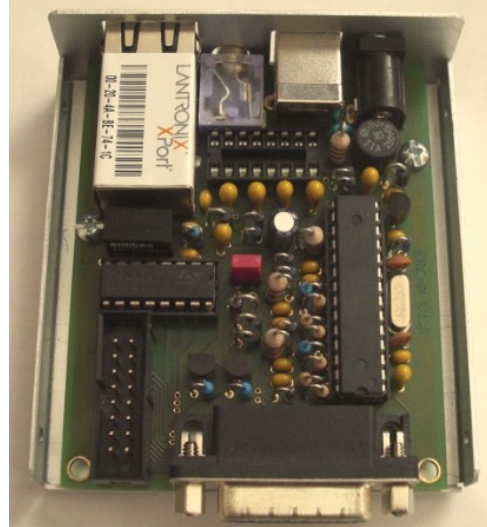
- Don't continue using the product if it is damaged.
- Keep electronic assemblies and components away from children!
- Products that carry electric voltages must be handled by taking care about the valid instructions and regulations.
- If the product must be repaired, only use original spare parts! Using different parts may cause property damage and personal injury! The repair has only to be done by an expert!
- The installation has to be done by a skilled expert.
- Connection-cables have to be chosen according to the needed diameter.
- Before working on the product all supply-voltages have to be securely cut of.
- The product is designed to work in clean and dry areas inside buildings.
- Prevent the product of humidity, water and heat.
- Don't use the product in areas where explosive gases, vapour or dust are or may occur.
- Don't let the product fall or apply mechanical stress as the product may be damaged.

## 1. Assembly of the Slimline-case

Put the 4 rubber-feet to the bottom-side of the bottom-part of the housing



Mount the ERC-M-Interface to the Bottom-part of the housing by use of 2 screws M3x6.



Remove the 2 bolts from the D-SUB on ERC-M and mount the top-part of the housing to the bottom-part by use of the bolts and the 4 screws.

