



# EASY-ROTOR-CONTROL M

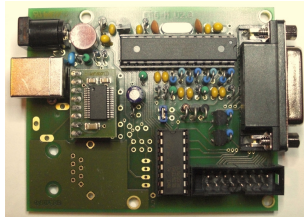
Choose your primary interface

Optional  
Select additional LAN-Interface

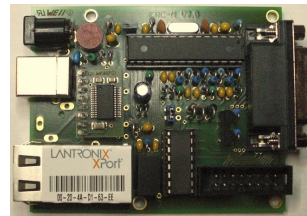
Optional  
Select type of housing

Connectivity options  
Add 1 or 2 rotor-cards or connectors (see list below)

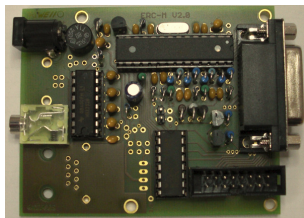
USB



LAN



RS232



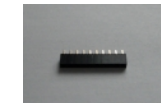
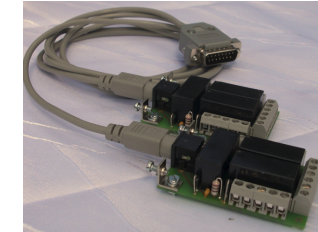
Slimline-housing



Desktop-housing with LCD, LEDs and keyboard for DUAL AZ



Desktop-housing with LCD, LEDs and keyboard for AZ&EL



## Connectivity option by rotor

Alliance – HD73	rotor-card
CDE/HAM/Hygain – HAM II/III/IV/M, CD44/45, TR44, T2X, HDR300A	rotor-card
Create – RC5-1, RC5-3, RC5A/B-3	rotor-card
Create – ERC5A-P, RC5A/B-3-P	6-pin DIN
Daiwa – MR750	rotor-card
Emotator – 105TSX, 502CXX, 1102MMX, 1103MMX, EV-700	rotor-card
Emotator - 747SRX, 750FXX, 1200/1800 FFX/FMX, 1300 MSAX	5-pin DIN
Giovannini – GE1000/T, GE1500/T	rotor-card HD
Kenpro – HR1300, KR400, KR400RC, KR450/650XL, KR500, KR600RC	rotor-card
Kenpro – KR-600S, KR800, KR800S, KR1000, KR2000RC	rotor-card
Kenpro – KR1000SDX	8-pin flat
Kenpro – KR-5400/5500/5600 without DIN-connector	2x rotor-card

## Connectivity option by rotor

Kenpro – KR-5400/5500/5600 with DIN-connector	8-pin DIN
Orion – OR-2300	rotor-card
Pro.Sis.Tel – Model B	9-pin DSUB
Walmar – ML, MU-1, MU-3, MH	rotor-card
Yaesu – G400, G400RC, G450A/C, G650A/C, G1000C, G500/500A	rotor-card
Yaesu - G550, G600, G600RC, G800S/SA, G1000S/SA, G2000RC	rotor-card
Yaesu – G-800/1000/2800 DXA/DXC	6-pin Mini-DIN
Yaesu – G800/1000/2700/2800 SDX	8-pin flat
Yaesu – G-5400/5500/5600 without DIN-connector	2x rotor-card
Yaesu – G-5400/5500/5600 with DIN-connector	8-pin DIN
Homebrew – AZ, EL	rotor-card
Homebrew – AZ/EL	2x rotor-card